



DIESEL FORKLIFT FD460



Hunan Kamuja Machinery & Equipment Co.,Ltd



A Certificated Company of GB/T 19001-2016
ISO 9001:2015

INTRODUCTION

Heavy duty forklift series FD, with many years of design and manufacturing experience, advanced technology. Products are widely used in logistics, stone processing, ports and terminals, and exported to foreign countries.

FEATURES

- ① The engine adopts a turbocharged engine with low fuel consumption, which has good power performance and large torque reserve.
- ② The braking system adopts the mature products of the manufacturer.
The brake is a disc brake, with fast heat dissipation, light weight, simple structure and convenient adjustment. It has good high temperature resistance performance under high load and stable braking effect.
- ③ The gearbox adopts domestic brand gearbox, which has good driving performance and traction performance. It is easy to maintain, economical and applicable, the accessories have good versatility.
- ④ The operating system adopts the pilot valve to control the working system. Simple, convenient and comfortable operation. While reducing the labor intensity of the driver, the work efficiency is improved.
- ⑤ Hydraulic system, double pump confluence, small system flow, low power consumption, stable performance.
- ⑥ The electrical system is equipped with maintenance-free batteries. Flame retardant wire and sheath, electrical components.
- ⑦ The cab is luxurious with shock absorption, equipped with sunroof, heating and cooling air conditioner, wide field of vision and comfortable seat. With explosion-proof film, explosion-proof, heat insulation. Anti-glare, sound insulation.
- ⑧ The fork adopts high-strength, mature products of the manufacturer, which can double the service life.
- ⑨ Tire rim, no spoke steel rim, bear heavy load. Puncture-resistant high-strength tires.
- ⑩ Reinforced drive axle, high-strength heavy-duty planetary wheel-side reduction drive axle. The axle housing has higher strength and greater bearing capacity. With the stability and stability.

HUNAN KAMUJA MACHINERY & EQUIPMENT CO.,LTD.

Room 818, 4th Floor, Chang Tong Logistic Center, No.18 Qingzhuhu Road, Changsha, Hunan, China

Tel: +86 0731 88677248 juana.yan@kamuja.cn www.kamuja.cn



▲ Certified Company of GB/T 19001-2016/ISO 9001:2015

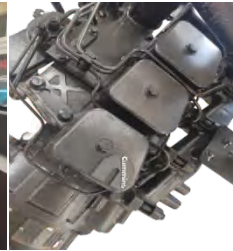
DETAILS



Side Shifter(Optional)



Cab & AC



Cummins Motor



LED Lights



Vehicle Lights



Alarm & Lights

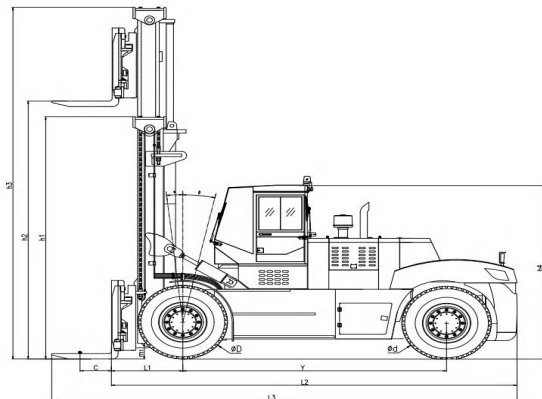
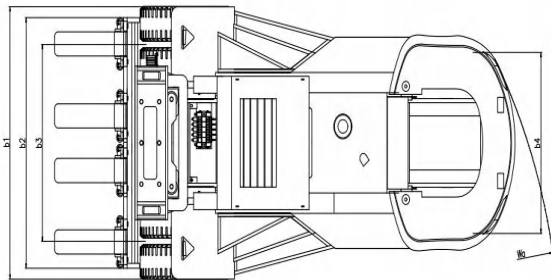


Joystick

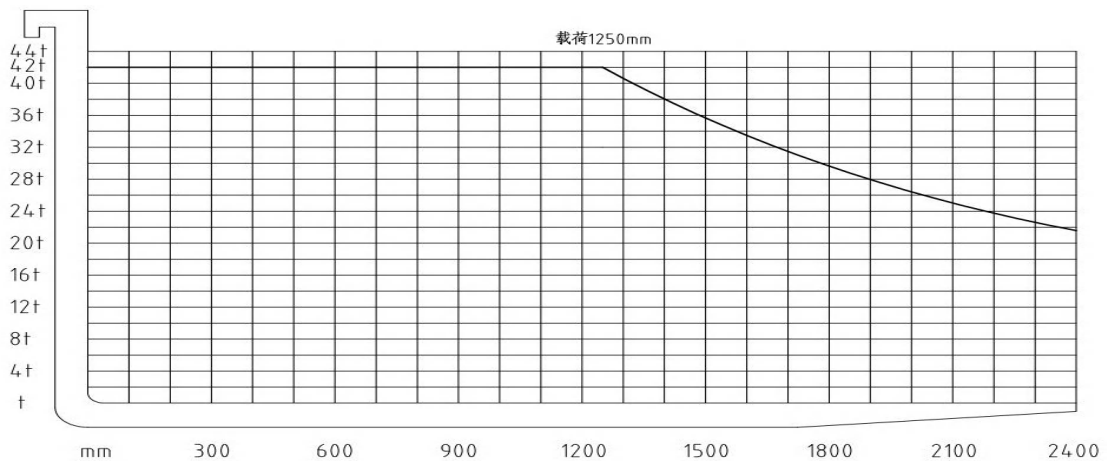


Digital Monitor

OVERALL



CAPACITY CHART



HUNAN KAMUJA MACHINERY & EQUIPMENT CO.,LTD.

Room 818, 4th Floor, Chang Tong Logistic Center, No.18 Qingzhuhu Road, Changsha, Hunan, China

Tel: +86 0731 88677248 juana.yan@kamuja.cn www.kamuja.cn



Certificated Company of GB/T 19001-2016/ISO 9001:2015

OPTIONAL ATTACHMENTS



Multi-functional soft bag clip



Brick clamp



Roll clip



String rod



Trash clip



Push-puller



Side shifter



Carton holder

Optional Devices and Accessories

- Tilt cylinder jacket
- Dual drive wheel
- Cab
- Overhead exhaust device
- User specified color
- Cab heater
- Rear working light
- Alarm lamp
- Solid tyre
- Middle exhaust device
- Exhaust fire protection
- Suspension seat
- Weighing system
- Auxiliary hydraulic valve assembly
- Extinguisher
- Copper water tank
- LED rear light
- Double air filter

Optional Fittings

- Roll clip
- Rotate the flat clamp
- Load stabilizer
- Multi-purpose bucket clamp
- Soft clip
- Can clip
- Miter clamp
- Boom
- String rod
- Side yoke
- Swivel fork
- Fork extension cover
- Load ejector
- Carton clip
- Position ejector
- Bucket
- Lifting hook
- Extended fork

Special Equipment for Mast

- Wide view full free Stage II Mast
- Wide field of view full free Stage III Mast
- Special fork

HUNAN KAMUJA MACHINERY & EQUIPMENT CO.,LTD.

Room 818, 4th Floor, Chang Tong Logistic Center, No.18 Qingzhuhu Road, Changsha, Hunan, China

Tel: +86 0731 88677248 juana.yan@kamuja.cn www.kamuja.cn



Certificated Company of GB/T 19001-2016/ISO 9001:2015



SPECIFICATIONS

Item	Specification	Unit	FD460	
General	Rated Load	kg	46000	
	Load center	mm	1250	
Dimensions	Lift Height	mm	4000	
	Fork Size(LxWxT)	mm	2600*300*130	
	Fork Spread(outside)(Min/Max)	mm	910/2830	
	Mast Tilt Angle(F/R)	deg	6"/12"	
	Fork Overhang	mm	1180	
	Lenght without forks	mm	8170	
	Overall width	mm	3600	
	Mast Lowered Height	mm	5040	
	Overhead Guard Height	mm	3820	
	Outer Turning Radius	mm	7730	
	Performance	Speed(Unload/Load)	Travel	Km/h
Lifting			Mm/s	300
Max gradeability(Load)		%	20	
Max drawbar pull(Load)		KN	240	
Setvice Weight		kg	56000	
Wheels&Tires	Tire	Front		4*18.00-25-28PR
		Rear		2*16.00-25-28PR
	Tread	Front	mm	2495
		Rear	mm	2880
	Wheelbase	mm	5500	
Ground Clearance(Under mast)	mm	400		
Power & Transmission	Battery	Voltage Capacity(5HR)	VA/h	2*12/150
	Engine	Model		WP12G375E350
		Manufacture		WeiChai
		Rated Output	Kw	276
		Rated Torque	N.m	1550
		No Of Cyinder		6
		Broe*Stroke	mm	126*155
	Transmissions	Dispiacement	L	11.6
		Manufacture		ZL80
Stage FWD/RVS			4/4	
	Operating Pressute	Mpa	21	

※ The technical information may vary by the update policy, the changes will be without prior notice.

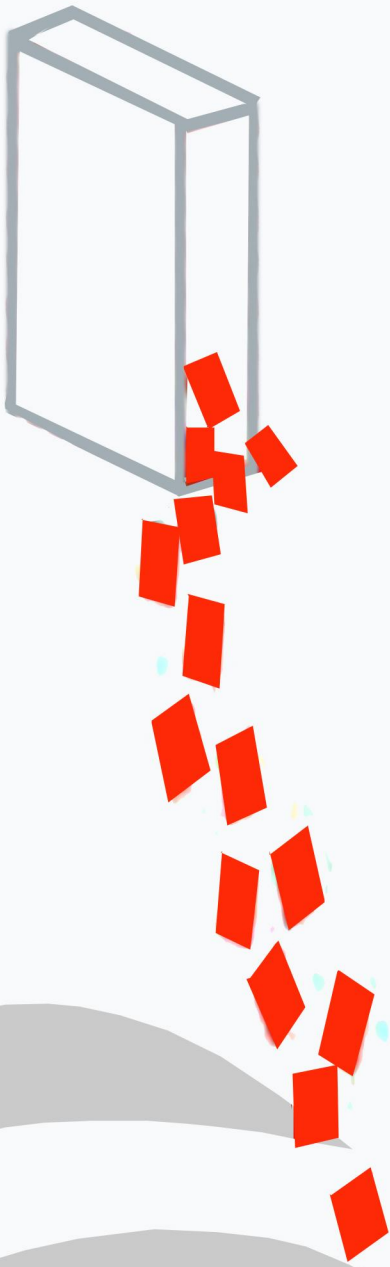
HUNAN KAMUJA MACHINERY & EQUIPMENT CO.,LTD.

Room 818, 4th Floor, Chang Tong Logistic Center, No.18 Qingzhuhu Road, Changsha, Hunan, China

Tel: +86 0731 88677248 juana.yan@kamuja.cn www.kamuja.cn



Certificated Company of GB/T 19001-2016/ISO 9001:2015



Hunan Kamuja Machinery & Equipment Co.,Ltd

Address: Qingzhu Hu Road N.18, Chang Tong Logistic Center Floor 4 Room 818,
Jinxia Economic Development Zone, Changsha City, Hunan Province, P.R of China.

333 SE 2nd Avenue Suit 2000 Miami FL 33131. USA

Tel: +86 731 8867 7248 e-mail: info@kamuja.cn

Web site: www.kamuja.cn



A Certificated Company of GB/T 19001-2016/
ISO 9001:2015